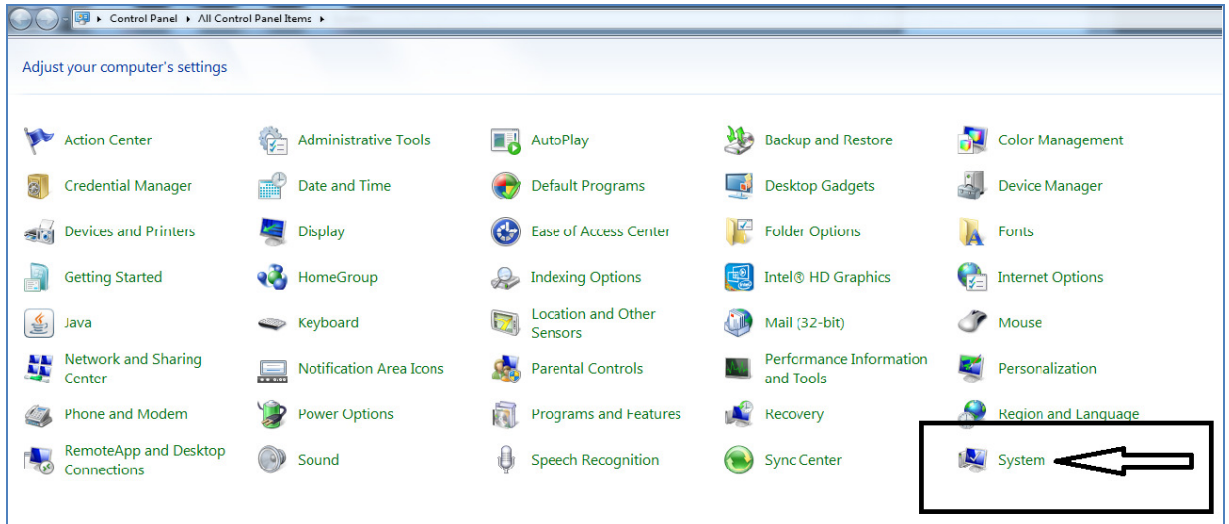
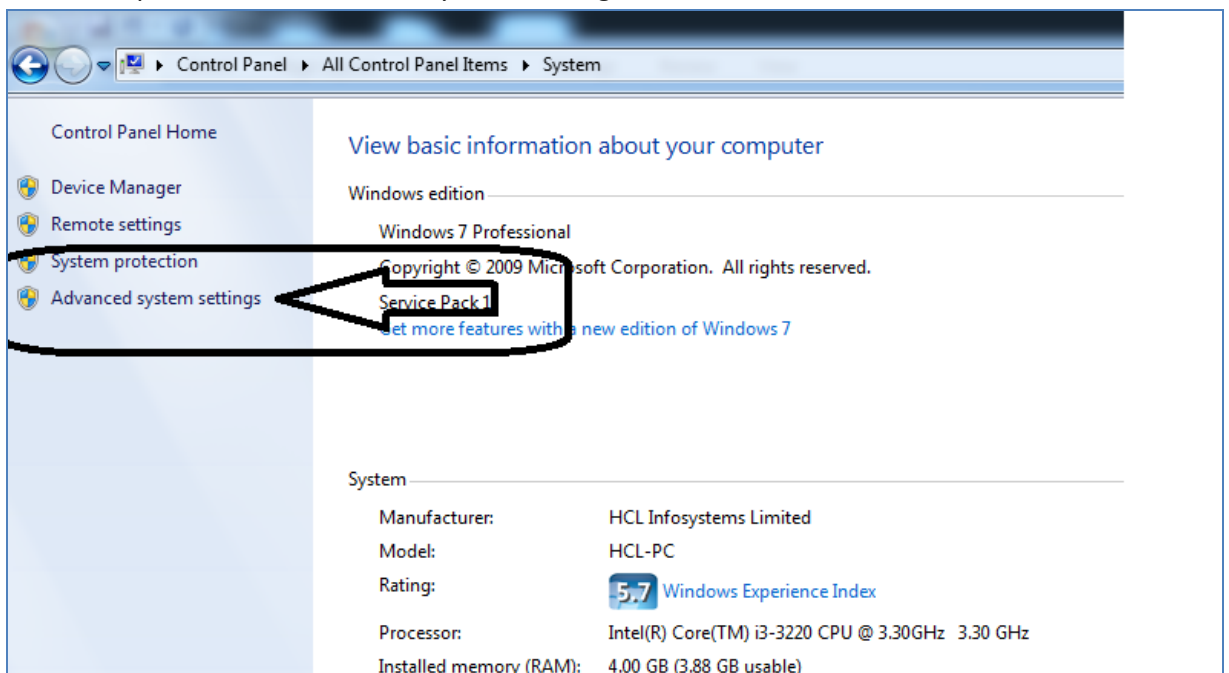


## How to Set Environment variables

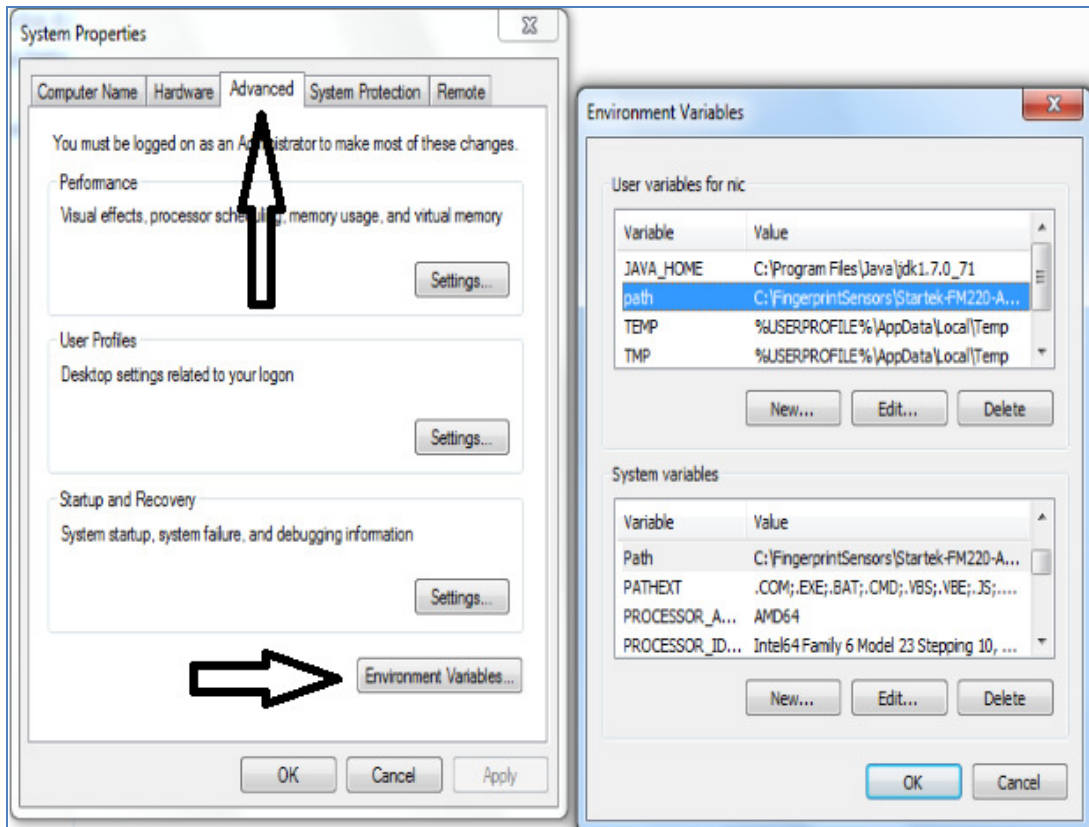
1. Go to Control Panel -> System



2. In the left pan click on Advanced System Settings.



3. In the Advanced Tab click on Environmental variable

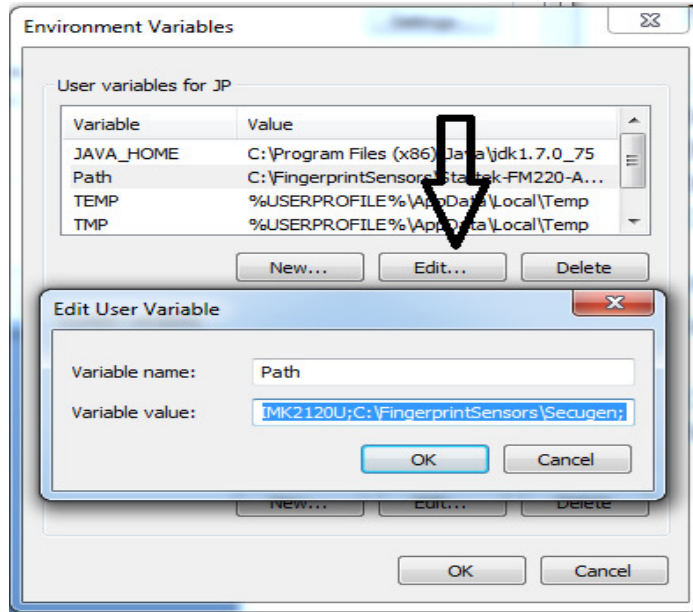


4. Update the User and System variables( variable Path)

5.

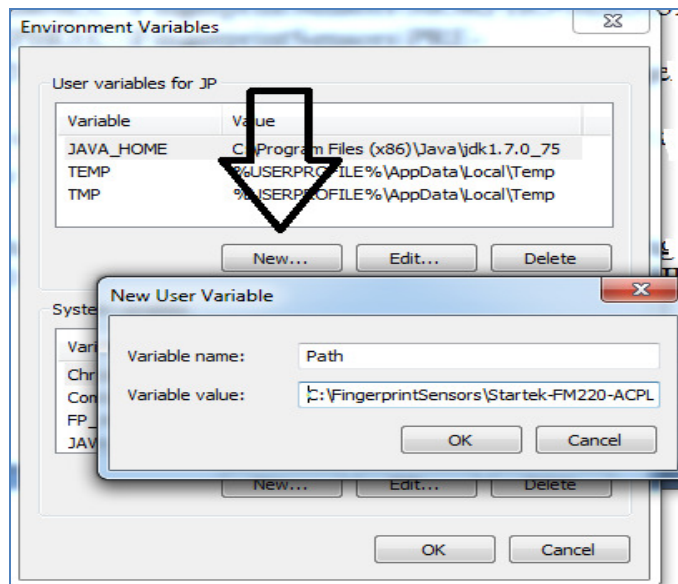
- 5.1 If the user path variable exists then at the end of the path variable add the below string line

```
;C:\FingerprintSensors\Startek-FM220-ACPL;C:\FingerprintSensors\MANTRA-MFS100-MANTRA;C:\FingerprintSensors\Nitgen-HFDU08-BioEnable;C:\FingerprintSensors\MORPHO-MSO13XX-MORPHO;C:\FingerprintSensors\PRE-CSD200;C:\FingerprintSensors\IMK2120U;C:\FingerprintSensors\Secugen;
```



5.2 If the user path variable does not exist then create a new path variable with the below string line.

C:\FingerprintSensors\Startek-FM220-ACPL;C:\FingerprintSensors\MANTRA-MFS100-MANTRA;C:\FingerprintSensors\Nitgen-HFDU08-BioEnable;C:\FingerprintSensors\MORPHO-MSO13XX-MORPHO;C:\FingerprintSensors\PRE-CSD200;C:\FingerprintSensors\IMK2120U;C:\FingerprintSensors\Secugen;



6. Do the steps 5.1 and 5.2 for the system variable

