

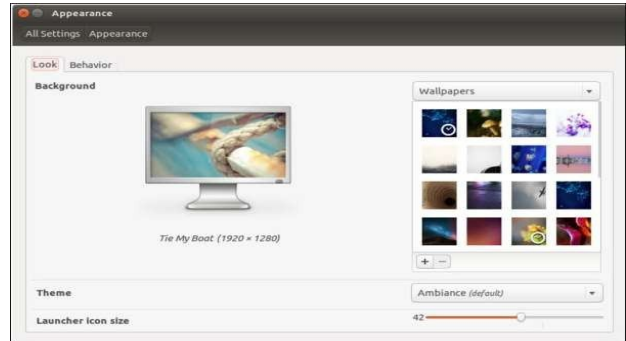
Course Name : CCC/O Level	Date : 15/04/20	Topic: OS(System Setting, Sample Questions)
---------------------------	-----------------	---

**Changing Display Properties:**

Display properties in Ubuntu, is a combination of two settings. The one is **Appearance** and the other is **Displays**.

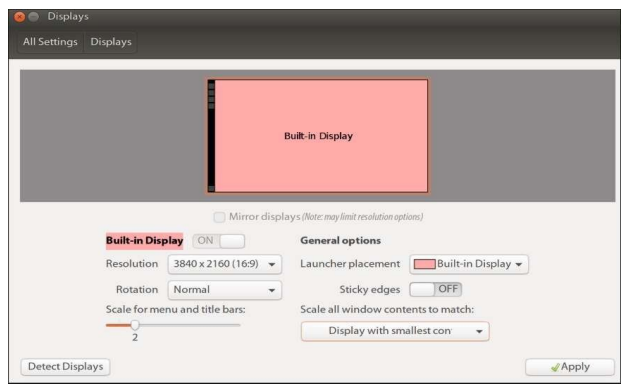
1) Following are the settings that are available under **Appearance**:

- **Change the desktop backgrounds.**
- **Change the themes.**
- **Launcher Icon Size.**
- **Auto-hide Launcher.**



2) Following are the settings that are available under **Displays**:

- **Change the resolution or orientation of the screen.**
- **Change another monitor to your computer.**

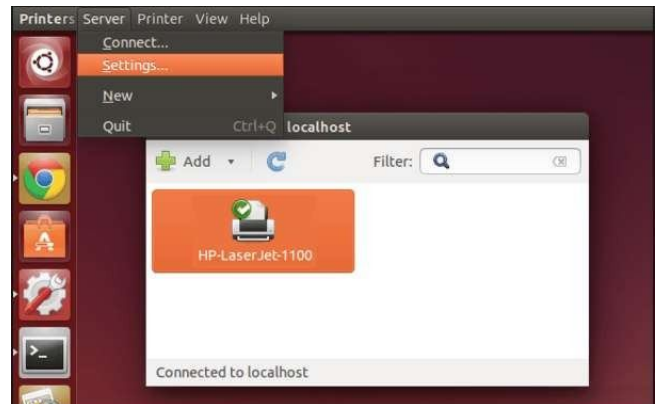


To move in to the display settings, click on **Dash ==> System Settings ==> Appearance / Displays / Colors.**

**Adding, Removing & Sharing Printers:**

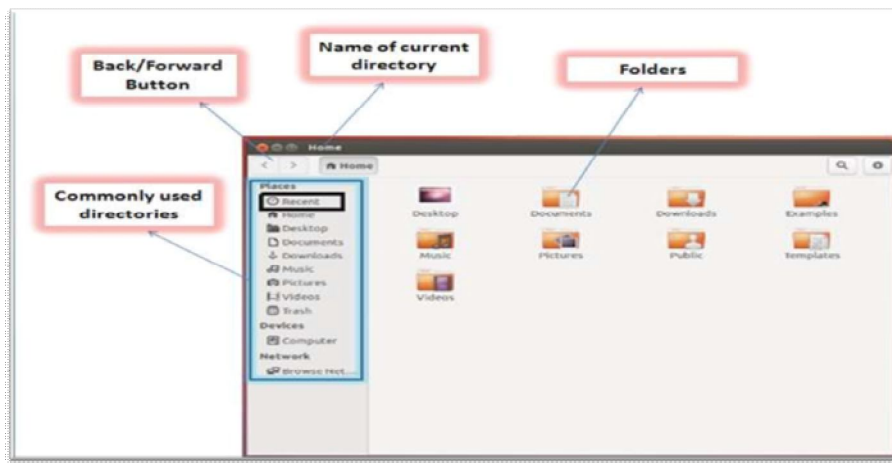
Printers, like any other device, need to be added on the OS so that they can work with it. Ubuntu recognizes the printer once we connect it to the PC. rest of the activities like- detection and installation of drivers begins automatically. Once installation is successfully completed, a prompt to print a *Test Page* is given to the user.

To remove and share a printer, we need to move in to the printer settings. We click on **Dash ==> System Settings ==> Printer.**



**File and Folder Management:**

Every OS needs a file manager program to let the user stroll within his files. In Ubuntu, that program is called- *Files*. 'Files' is very similar to *Explorer* in Windows or *Finder* in OS X. Files is a default button in the Launcher, located mostly next to the Dash.



As in the figure, there are two panes in the interface. The left pane shows the commonly used directories whereas right pane shows the folders and files in the current directory. There is also a Back/Forward button duo that enables a user to move to and fro among the directories.

- To create a new folder, we right click in the blank area of the right pane and select *New Folder* from the right click menu. Or Short cut (*Ctrl+Shift+N*).
- To search a file or a Folder we click on the Search button in the toolbar area.
- For cut-copy-paste, we can either use the right click menu or simple short-cuts (*Ctrl+X*, *Ctrl+C*, *Ctrl+V*).

To hide a file or directory, we simply add a dot (.) as prefix to the file or directory name. the default OS policy hides instantly all those files or directories that are prefixed with a dot. We can further see all hidden stuff by clicking View Show Hidden Files from the Menu bar. We can either use the short-cut (*Ctrl+H*) also.

**Sample Paper :**

- 1) \_\_\_\_\_ is the screen background and main area of Ubuntu where you can open and manage file and programs.  
**A. Unity**                      **B. Icons**                      **C. Screen Sever**                      **D. Application Window**
- 2) The operating System of computer serves as a software interface between the user and the \_\_\_\_\_.  
**A. Memory**                      **B. Peripheral**                      **C. Hardware**                      **D. Screen**
- 3) GUI is used as an Interface between \_\_\_\_\_.  
**A. Hardware and software**                      **B. Man and Machine ware**  
**C. software and user**                      **D. None of these**
- 4) Which of the following statement is incorrect regarding to shortcut icons?  
**A. Can be created by dragging and dropping**                      **B. Can be created using paste option**  
**C. Can be created by shortcut wizard**                      **D. Can be created by using Make Link.**
- 5) Shortcut to show a hidden file in Ubuntu Operating System.  
**A. Ctrl + H**                      **B. Ctrl + Alt + H**  
**C. Ctrl + Alt + F**                      **D. Ctrl + F**
- 6) In Ubuntu, a new printer can be added by \_\_\_\_\_ option in \_\_\_\_\_.  
**A. Control panel, Printers**                      **B. System Settings, Printers**

C. Devices, Printers

D. None of these

7) We press and hold Super Key to:

A. Turn Off the PC

B. See all Short cuts

C. Restart The PC

D. None of these

8) Linux is a(n)\_\_\_\_\_Operating System.

A. Open source

B. Proprietary

C. Both a and b

D. None of these

9) In Ubuntu, Dash is a part of:

A. Menu Bar

B. Desktop Background

C. The Launcher

D. None of these

10) The Short-cut to create a new folder in Ubuntu File manager:

A. Ctrl + N

B. Alt + N

C. Ctrl + Alt + N

D. Ctrl + Shift + N

11) On Unity, Date/Time is shown in:

A. Launcher

B. Menu Bar

C. Background

D. None of these

12) In Ubuntu, Software Center is:

A. A menu to launch software

B. A folder

C. A tool to add/remove software

D. None of these

13) Full form of *.mpeg* is:

A. Motion Picture Expert Group

B. Motion Picture Expert Graphics

C. Movie Picture Expert Group

D. None of these

14) A Folder is also called:

A. A File

B. A Directory

C. A Software

D. None of these