

Course Name : O Level(B4-1st sem.)
Topic : Computer Network types

Subject : ITT&NB
Date : 14-04-20

Computer Network Types

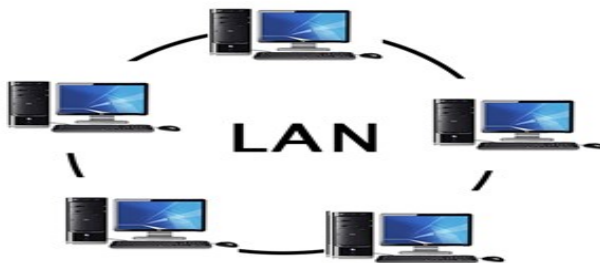
A computer network is a group of computers linked to each other that enables the computer to communicate with another computer and share their resources, data, and applications.

A computer network can be categorized by their size. A **computer network** is mainly of **four types**:

- LAN(Local Area Network)
- PAN(Personal Area Network)
- MAN(Metropolitan Area Network)
- WAN(Wide Area Network)

LAN(Local Area Network)

- Local Area Network is a group of computers connected to each other in a small area such as building, office.
- LAN is used for connecting two or more personal computers through a communication medium such as twisted pair, coaxial cable, etc.
- It is less costly as it is built with inexpensive hardware such as hubs, network adapters, and Ethernet cables.
- The data is transferred at an extremely faster rate in Local Area Network.
- Local Area Network provides higher security.



PAN(Personal Area Network)

- Personal Area Network is a network arranged within an individual person, typically within a range of 10 meters.
- Personal Area Network is used for connecting the computer devices of personal use is known as Personal Area Network.
- **Thomas Zimmerman** was the first research scientist to bring the idea of the Personal Area Network.
- Personal Area Network covers an area of **30 feet**.
- Personal computer devices that are used to develop the personal area network are the laptop, mobile phones, media player and play stations.



There are two types of Personal Area Network:

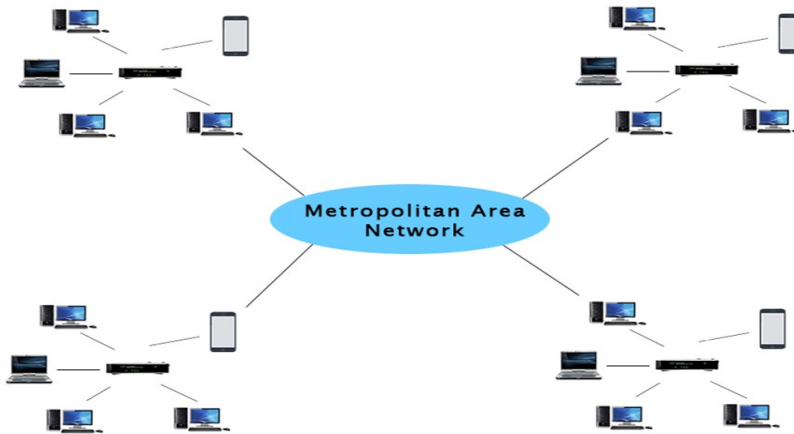
- Wired Personal Area Network
- Wireless Personal Area Network

Wireless Personal Area Network: Wireless Personal Area Network is developed by simply using wireless technologies such as WiFi, Bluetooth. It is a low range network.

Wired Personal Area Network: Wired Personal Area Network is created by using the USB.

MAN(Metropolitan Area Network)

- A metropolitan area network is a network that covers a larger geographic area by interconnecting a different LAN to form a larger network.
- Government agencies use MAN to connect to the citizens and private industries.
- In MAN, various LANs are connected to each other through a telephone exchange line.
- The most widely used protocols in MAN are RS-232, Frame Relay, ATM, ISDN, OC-3, ADSL, etc.
- It has a higher range than Local Area Network(LAN).



Uses Of Metropolitan Area Network:

- MAN is used in communication between the banks in a city.
- It can be used in an Airline Reservation.
- It can be used in a college within a city.
- It can also be used for communication in the military.

Exercise:

1. Compare between LAN and MAN.