

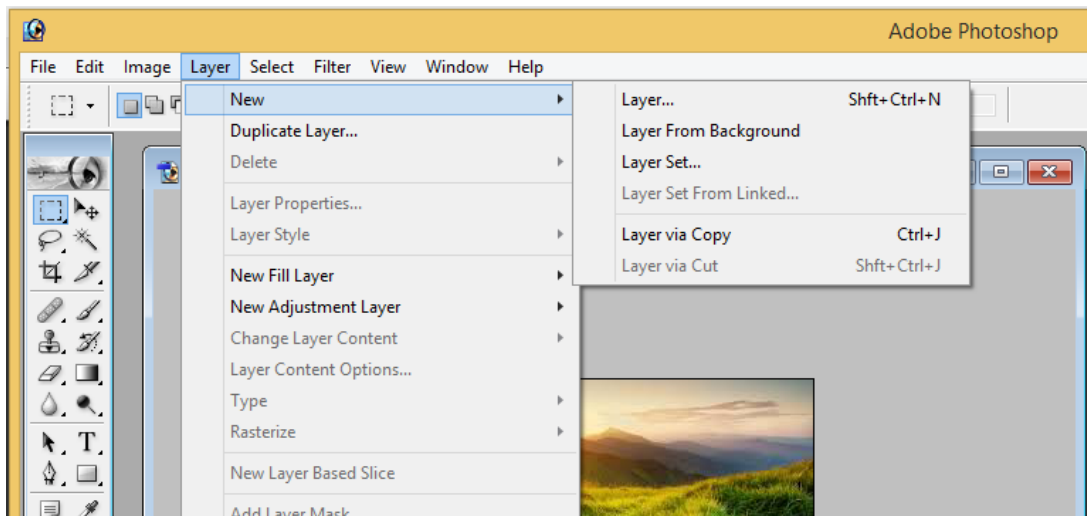
## Understanding Layers

Ability to create and use multiple Layers within the same image is Photoshop's most powerful feature. Layers are the key working platform in Photoshop, which are like sheets of transparency. As objects are placed on a layer, they become part of the layer, just as if you had drawn on a transparency with a marker.

A layer is one layer on top of another, all of which can be edited independently of each other and laid on top of or beneath one another, and then later combined to form a single, flat image. If two objects are on the same layer and you want to move them closer to each other, you need to cut them using the respective tools and physically move them. If they are on different transparent layers, however, all you have to do is move the layers with the move tool until the objects are closer to each other.

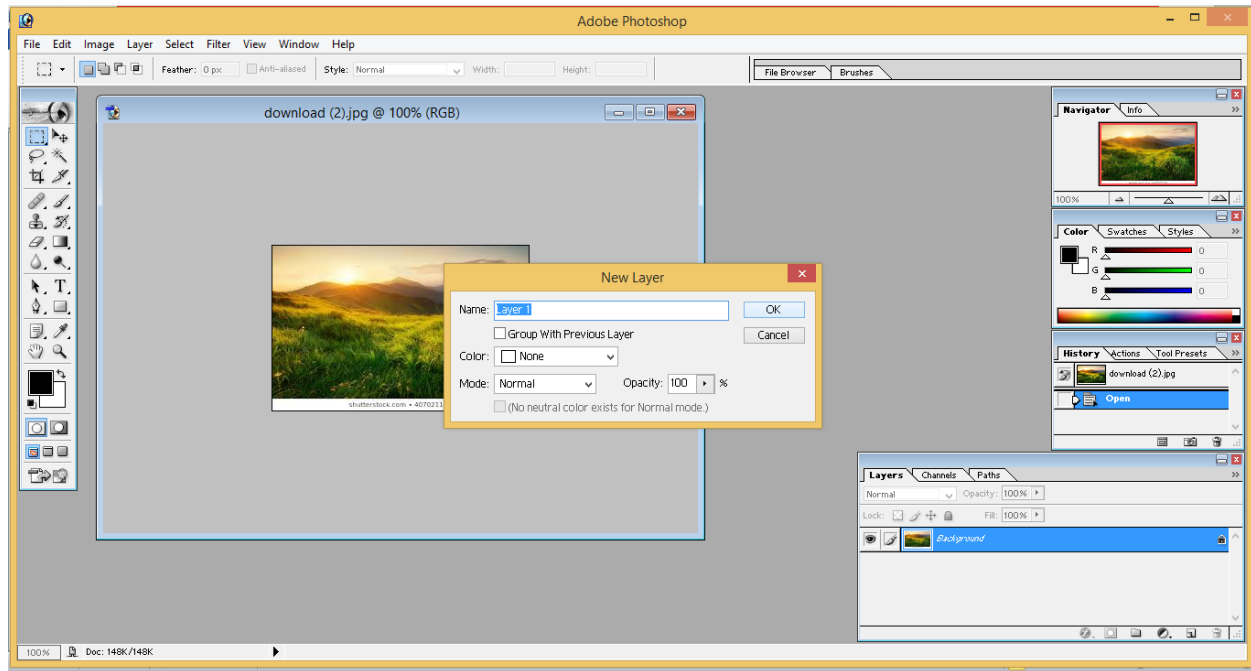
We start working with the “**Background**” layer when an image is created. We can't use all effects on a background layer and to use various features, we have to create Layers.

To create a new layer, click the “**Layer**” menu, and choose “**Layer**” from the “**New**” menu or simply click **Shift+Ctrl+N**.

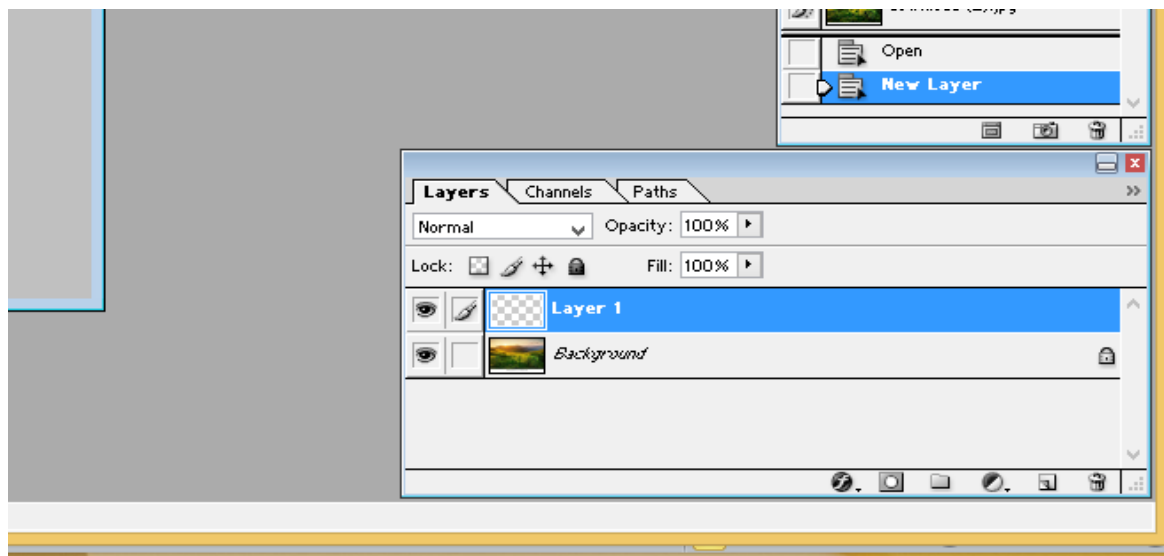


Once we choose New, a new window that pops up, giving option to choose layer name, color, Mode, Opacity. Choose the desired details and Click **OK**.

You can see that there is a three tab window(Layer Panel) showing Layers, Channels, and Paths at the Bottom Right Corner of the Photoshop Window.



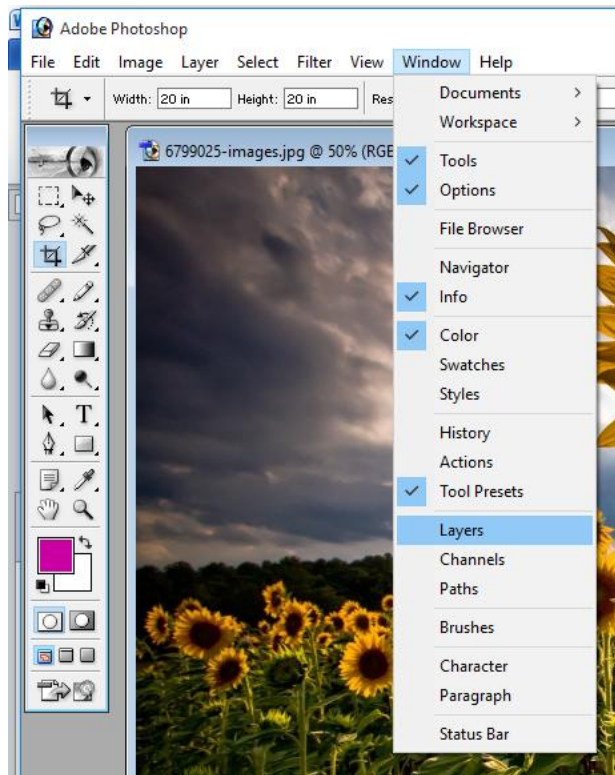
Once we add a layer and press Ok, we can see that a new Layer is added in the Layer Panel as layer1.



The “Layer 1” is above the “Background” layer as also shown in the window. This means that anything that’s on Layer 1 will be done first over anything in the Background layer. Things in the Background layer will be obstructed by things in Layer 1.

We may easily switch back and forth between layers to move items independently of items in other layers from the 3 tab window.

In case, you are not seeing the 3 Tab Layer window, you may have closed it. To get that, just Click on Windows tab in Main Menu and Choose Layers (if not selected).



## **Switching Back and Forth Between Layers**

All the changes are made to the layer on which you are working on the which is selected under the “Layers” tab.

If you wish to work on a different layer, click the name of that layer in Layer Window. And if you want to bring a different layer to the front of the image, you have to click and drag it.

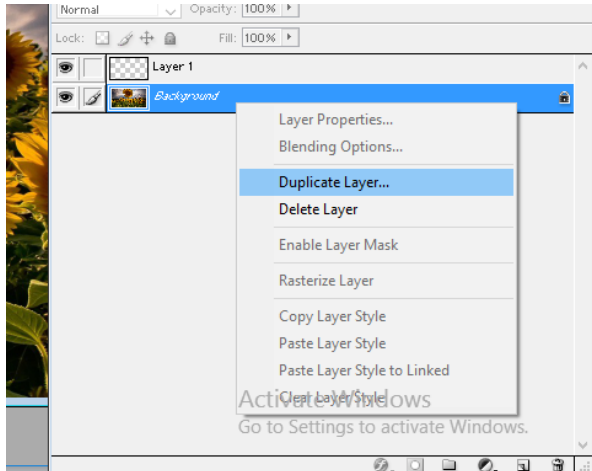
## **Create a new layer with effects from another layer**

To do so, first select the existing layer in the Layers panel by clicking on it. Then

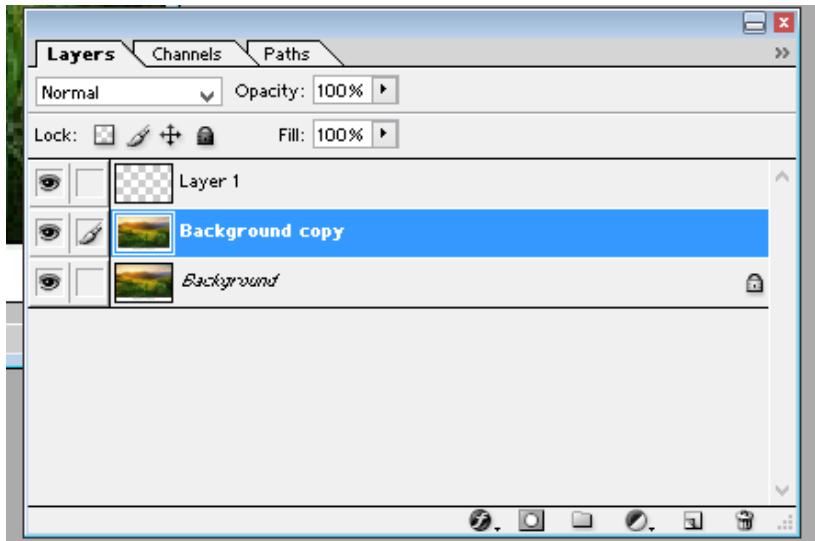
Either drag that layer to the Create a New Layer button at the bottom of the layer.

Or

Right Click on the Layer and select Duplicate Layer.



The new layer will be created having the effects of the existing one with “Copy” word in the Layer name.



## **Assignment**

- 1.What are layers? Explain.
2. Which is the Default Layer in PhotoShop?
3. How we can add a new Layer to the Image?