

Course Name: **A Level (1st Sem)**

Topic: **ERD – Relationship & Its Types Contd. (Part 3)**

Subject : **Introduction to DBMS**

Date: **01-Apr-2020**

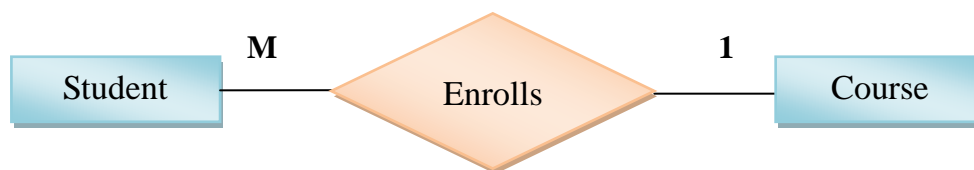
Relationship Types Contd.

- **Many to One Relationship**

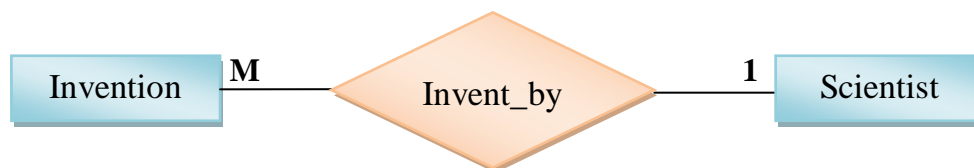
When more than one instance of an entity is associated with single instance of another entity then it is called Many to One Relationship.

Note: Many to One relationship can also be viewed as One to Many relationships depending on which way we look at it.

Example1: A Student enrolls for only one Course but a Course can have many Students.



Example2: A Scientist can invent many Inventions but an Invention is associated with single Scientist.



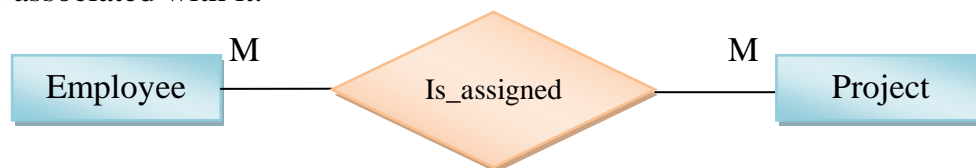
- **Many to Many Relationship**

When more than one instance of an entity is associated with more than one instance of another entity then it is called Many to Many Relationship.

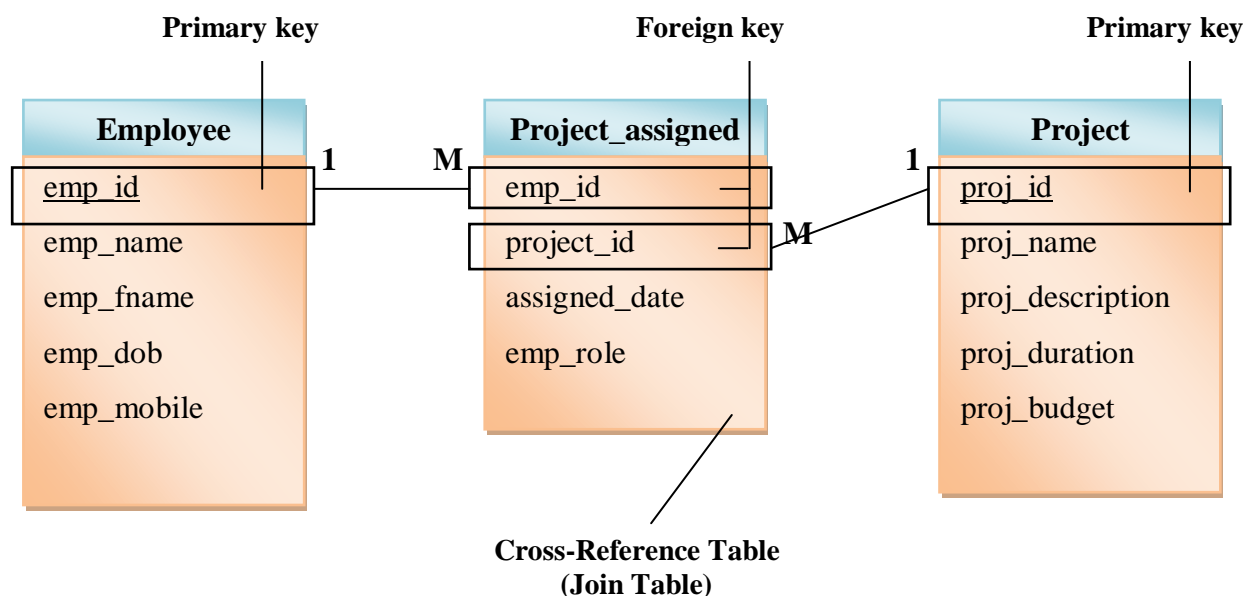
Example1: A Student is associated with many Teachers and a Teacher is associated with many Students.



Example2: An Employee can be assigned many Projects and a Project can have many Employee associated with it.



Important Point: A “Many to Many” relationship could be thought of as two “One to Many” relationship linked together. Two “One to Many” tables linked together through intermediary table (also called Cross-reference table). This table links the other two tables together.



Exercises:

1. Draw ER diagram for representing Many to One Relationship.
2. Draw ER diagram for representing Many to Many Relationship.

(Note: You must use different examples other than above.)