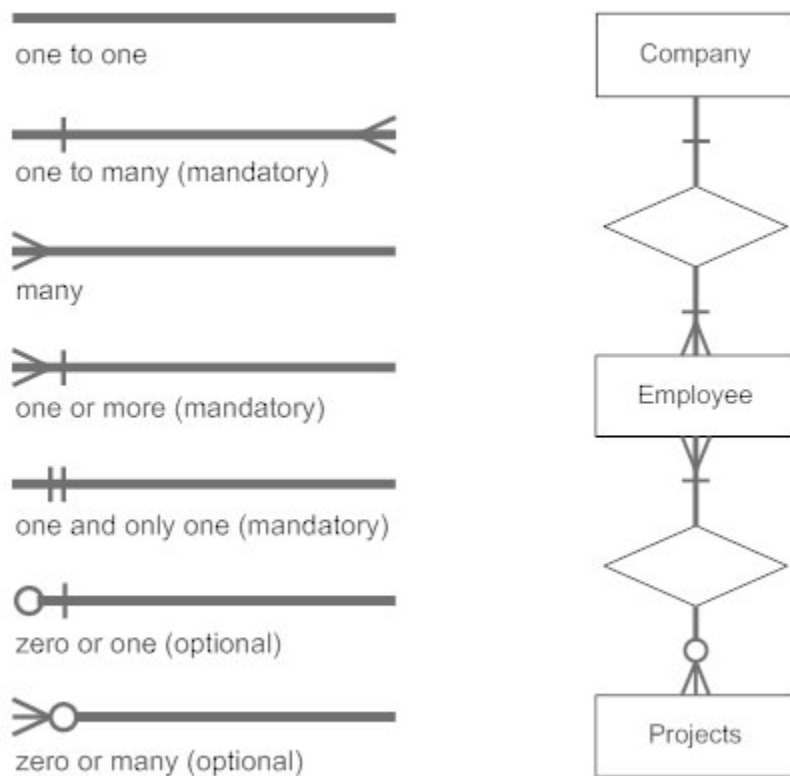


Notation of ER diagram

Database can be represented using the notations. In ER diagram, many notations are used to express the cardinality. These notations are as follows:



MariaDB Database

MariaDB is a popular fork of MySQL created by MySQL's original developers. It grew out of concerns related to MySQL's acquisition by Oracle. It offers support for both small data processing tasks and enterprise needs. It aims to be a drop-in replacement for MySQL requiring only a simple uninstall of MySQL and an install of MariaDB. MariaDB offers the same features of MySQL and much more.

Key Features of MariaDB

The important features of MariaDB are –

- All of MariaDB is under GPL, LGPL, or BSD.
- MariaDB includes a wide selection of storage engines, including high-performance storage engines, for working with other RDBMS data sources.
- MariaDB uses a standard and popular querying language.
- MariaDB runs on a number of operating systems and supports a wide variety of programming languages.
- MariaDB offers support for PHP, one of the most popular web development languages.
- MariaDB offers Galera cluster technology.
- MariaDB also offers many operations and commands unavailable in MySQL, and eliminates/replaces features impacting performance negatively.

All downloads for MariaDB are located in the [Download](#) section of the official MariaDB foundation website.

Installing on LINUX/UNIX

If you have intimate knowledge of Linux/Unix systems, simply download source to build your install. MariaDB offers packages for the following Linux/Unix distributions –

- RedHat/CentOS/Fedora
- Debian/Ubuntu

The following distributions include a MariaDB package in their repositories –

- openSUSE
- Arch Linux
- Mageia
- Mint
- Slackware

Follow these steps to install in an Ubuntu environment –

Step 1 – Login as a root user.

Step 2 – Navigate to the directory containing the MariaDB package.

Step 3 – Import the GnuPG signing key with the following code –

```
sudo apt-key adv --recv-keys --keyserver keyserver.ubuntu.com  
0xcbcb082a1bb943db
```

Step 4 – Add MariaDB to the **sources.list** file. Open the file, and add the following code –

```
sudo add-apt-repository 'deb  
http://ftp.osuosl.org/pub/mariadb/repo/5.5/ubuntu precise main'
```

Step 5 – Refresh the system with the following –

```
sudo apt-get update
```

Step 6 – Install MariaDB with the following –

```
sudo apt-get install mariadb-server
```

Assignments

1.what is Maria DB?explain its features.